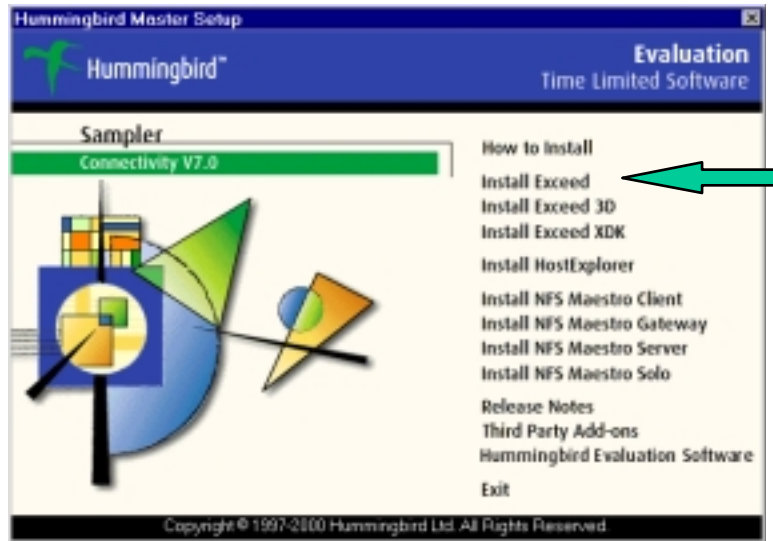


TSS Quick Start

- Step 1 Install Exceed
- Step 2 Install Exceed 3d
- Step 3 Install Digital Fortran Version 6.0 (Optional)
- Step 4 Install Thermal Synthesizer System
- Step 5 Install Microsoft Windows Script 5.6

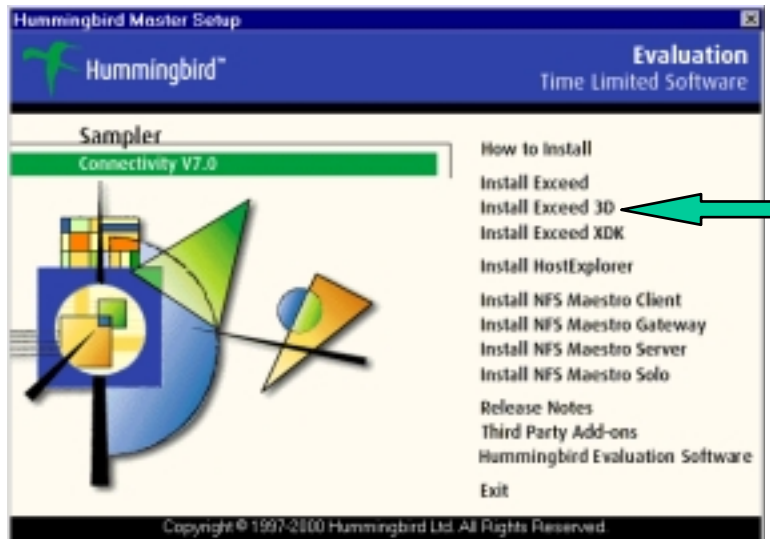
STEP 1 Install Exceed

Install Hummingbird Exceed, SpaceDesign recommends the typical installation with the default settings.



STEP 2 Install Exceed 3D

Install Hummingbirds Exceed 3D, SpaceDesign recommends the typical installation with the default settings.

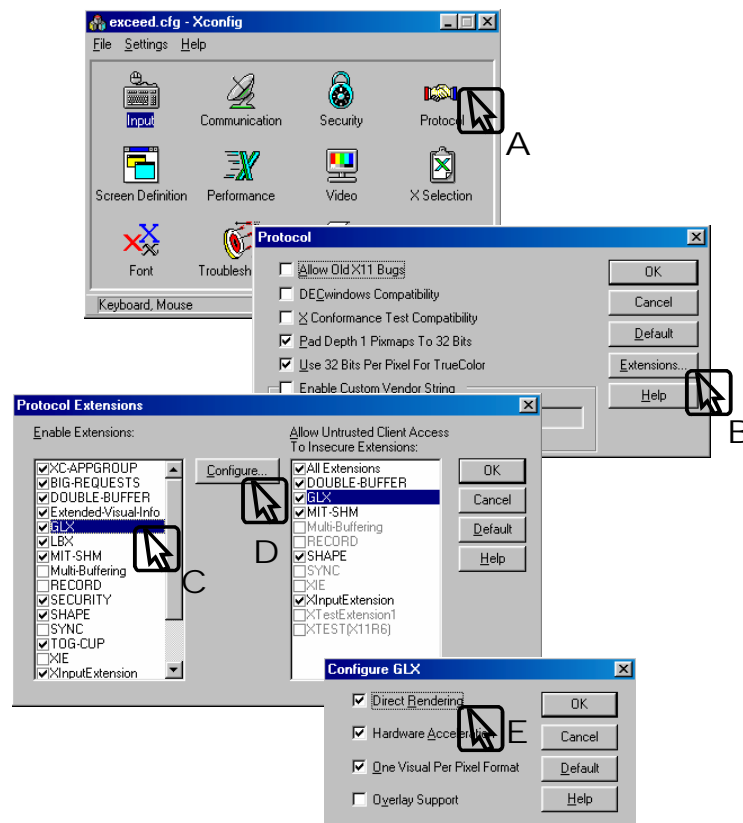


STEP 2 Continued

Exceed 3D supports hardware accelerated graphics cards. The following actions are required to enable the direct rendering option.

Launch Xconfig from the Start Menu
Programs | Exceed | Xconfig

- A. Double click on Protocol
- B. Choose Extensions
- C. Highlight GLX
- D. Choose Configure...
- E. Make sure Direct Rendering is checked!



Trouble-Shooting: Some OpenGL Hardware Accelerated graphics cards do not fully support GLX extensions. If graphical problems occur, first update the graphics card driver. If the problem persists, turn off hardware acceleration in the Configure GLX form above.

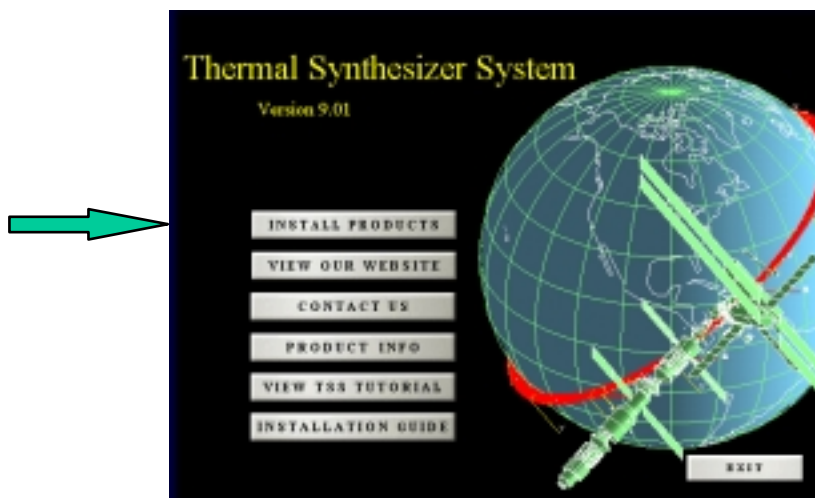
STEP 3 Install Digital Fortran Version 6.0 (Optional)

Sinda/Fluint is included with Thermal Synthesizer System. Fortran is required to run Sinda/Fluint.



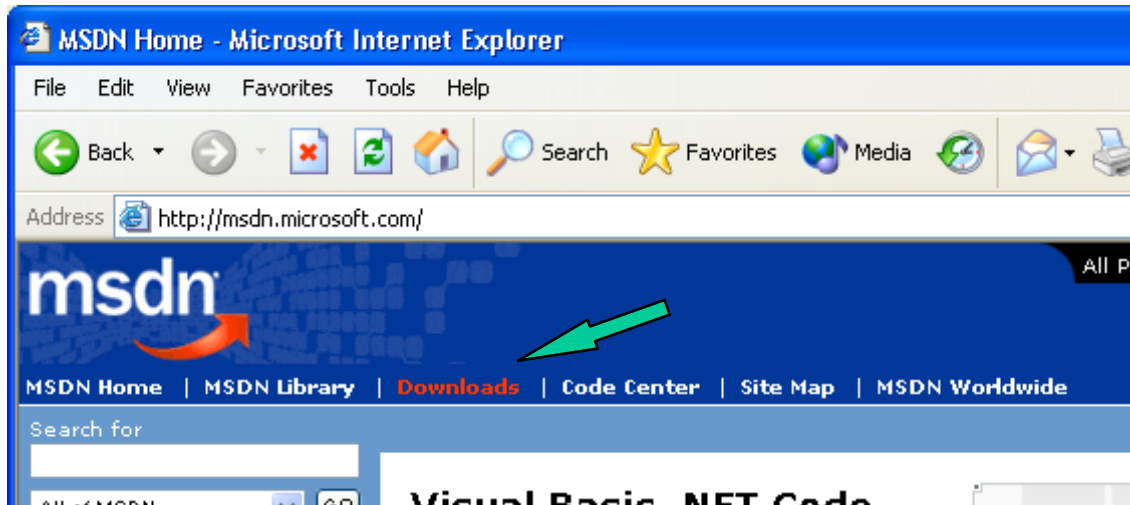
STEP 4 Install Thermal Synthesizer System Version 10.01

Insert the TSS Version 10.01 CD and choose Install Products. You will then be asked to choose Windows 9x or Windows NT.



STEP 5 Install Microsoft Windows Script 5.6

In a web browser go to <http://msdn.microsoft.com>. And choose downloads from the horizontal task bar.



From the left-hand side vertical tree choose:

- A. Web Development
- B. Windows Script
- C. Windows Script 5.6

Download by Choosing the appropriate language and platform.

